



Forever Curious

Wave 2

The stories

Overcoming barriers

The stage

Photography
above and beyond

Curious Journey

Wedding Wheel

The show time

Never Still

Traditional Transport

Creative Sparks

Wild Art

A large teal-colored triangle with rounded corners, centered on the slide. Inside the triangle is a dark gray circle.

LOCATIONS

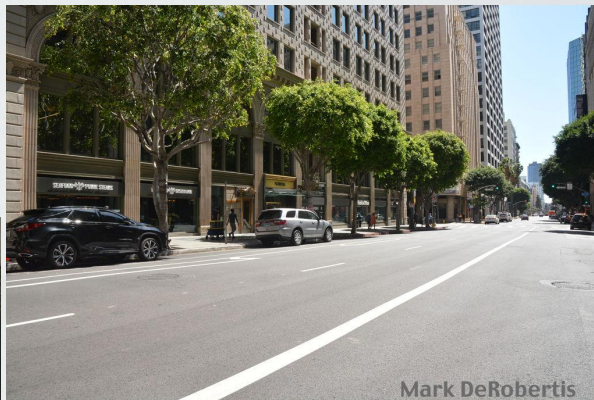


Curious journeys
Wedding wheels

LOCATION

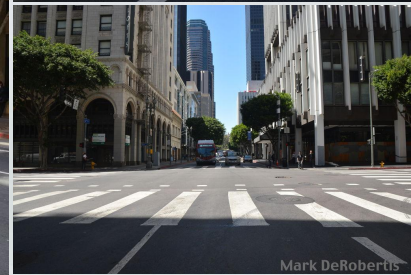
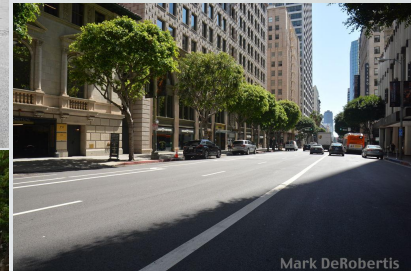
01 Grand At 6th 4-2022

The corner building's classic arched windows could provide a beautiful backdrop for the opening group photo. Although the surrounding buildings have a very 'American' feel, they also carry a bit of European atmosphere. Riding a motorcycle along the long boulevard could make for a great closing scene.



FRIDAY SHORTLIST

NO. 1



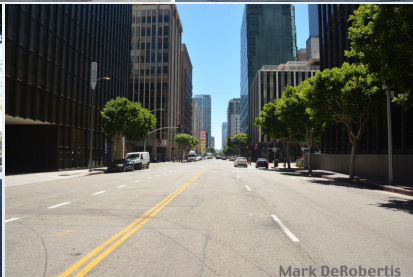
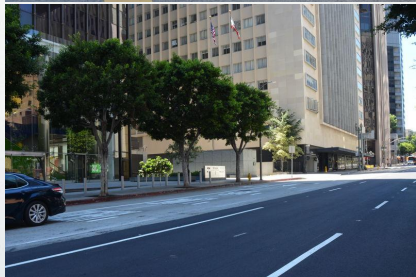
LOCATION

15 Hope At 6th To Wilshire And Wilshire

FRIDAY SHORTLIST

NO. 2

There are several locations on the site suitable for potential opening shots. The area has a slightly more 'American' vibe, but it's diverse, and several parts of the road are ideal for filming motorcycle scenes. It's a somewhat more modern part of the city. More and closer shots of a few locations would be needed.



LOCATION

07 8th Spring Main

A variation of the first version, with beautiful starting buildings that can provide a great foundational atmosphere for the story. The buildings also have a nice European feel.

FRIDAY SHORTLIST

NO. 3



Creative sparks
Wild art



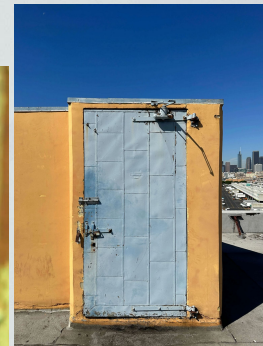
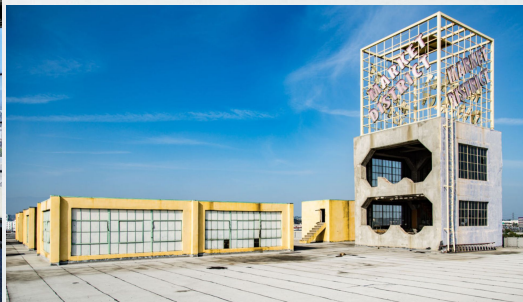
LOCATION

00 The Perch

FRIDAY SHORTLIST

NO. 1

The weather is not an issue due to the covered area, so filming is possible even in strong sunlight or rain. It's a large, well-adaptable location, and the buildings and window surfaces can be used in exciting ways. There's a beautiful view of the city.



PROPERTY DESCRIPTION

Welcome to The Perch by 503DTLA! This 55,000 sqft rooftop is massive! It's located atop a turn-of-the-century warehouse in the Produce Market District of Downtown Los Angeles and features the absolute best available, uninterrupted view of the Downtown Los Angeles skyline. The rooftop also includes several unique structures, skylights and windows, painted walls, stairways, and other aesthetic features which will give you so many different ways to create!

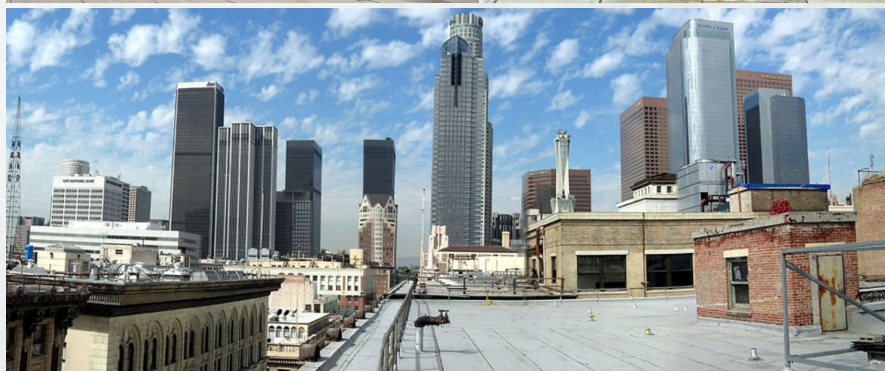
LOCATION

04 Frontier Hotel

FRIDAY SHORTLIST

NO. 2

A beautiful industrial environment, with the red brick surface and the small building serving as a great base and complement to the metal sculptor's workshop. There's a beautiful view of the city, and the hotel billboard adds a special flavor to the scene.



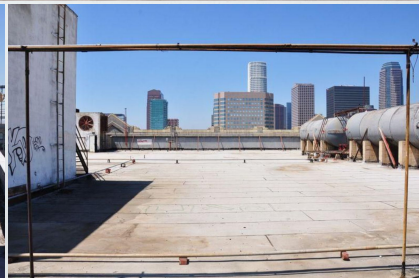
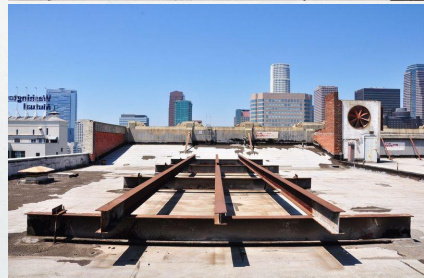
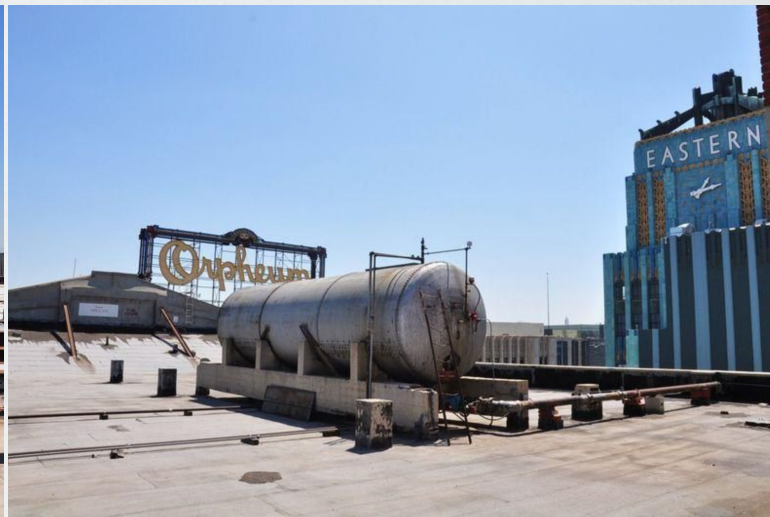
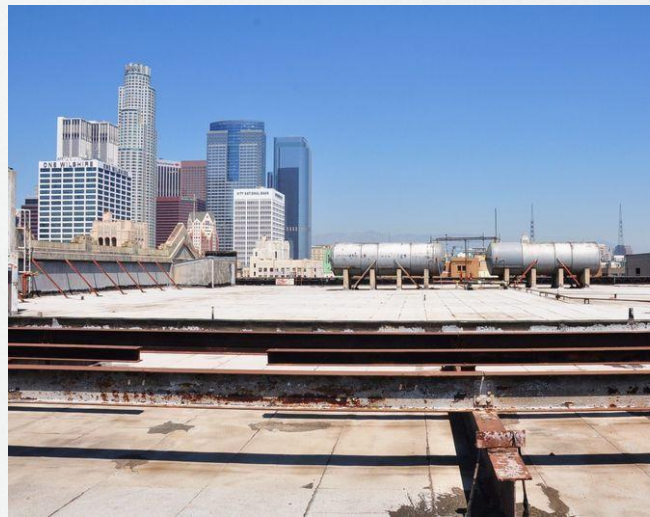
LOCATION

33 UN 8416LA

FRIDAY SHORTLIST

NO. 3

The iron objects on the site could serve as a good foundation for the metal art set to be built. It's a large area with exciting structures and a beautiful view of the skyscrapers.



Curious journeys
Never still



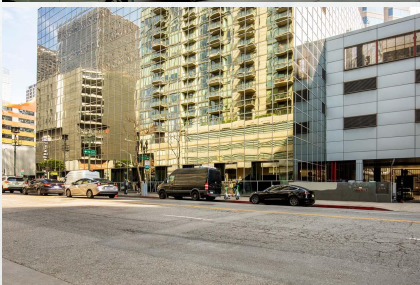
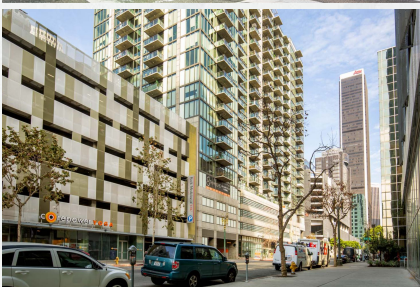
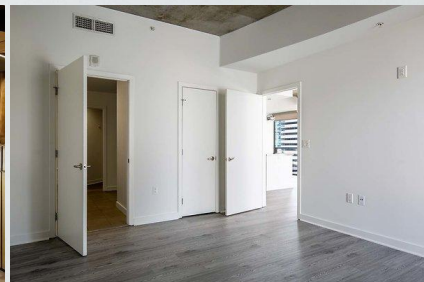
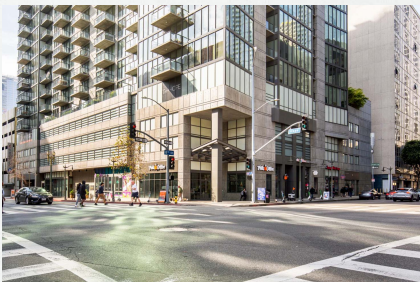
LOCATION

15 A2F 735

The location is well-suited to serve as a backdrop for the story, both indoors and outdoors. The variety of indoor spaces offers great creative freedom, not only for developing the main storyline. Empty or furnished rooms, as well as the lobby or the rooftop terrace, can all work beautifully.

FRIDAY SHORTLIST

NO. 1

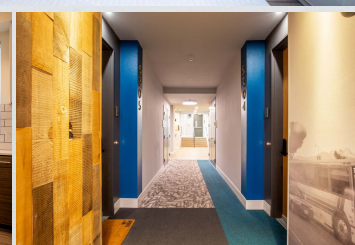
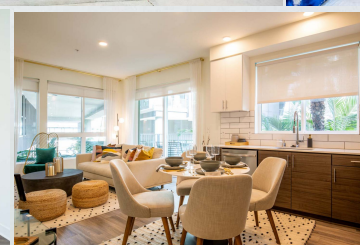
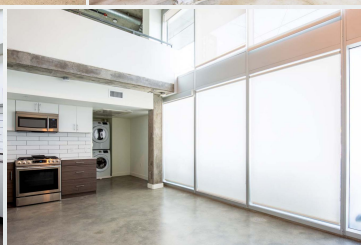
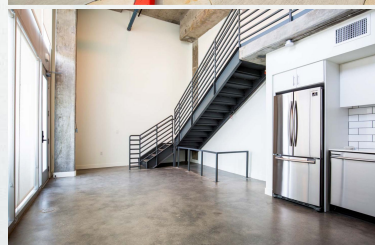


LOCATION
13 A2F 575

FRIDAY SHORTLIST
NO. 2

Spacious and open outdoor entrance from the street.

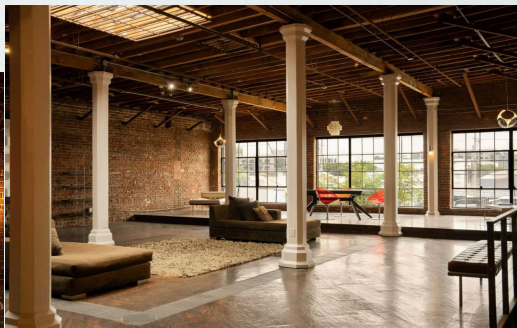
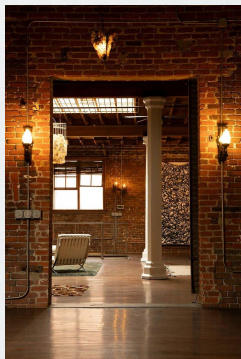
A wide selection of indoor spaces, with empty or fully furnished apartments available.



LOCATION
14 A2F 682

The slightly whimsical, artistic interior offers great versatility not only for bringing the main story to life. The interior and the building's unique exterior façade can add a distinctive and special atmosphere to the story.

FRIDAY SHORTLIST
NO. 2



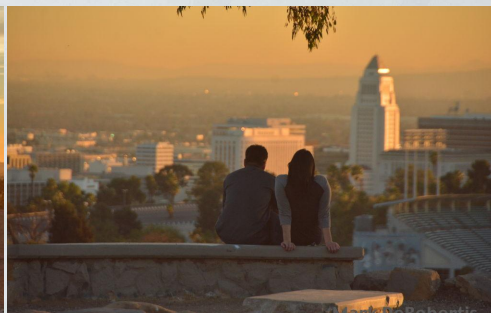
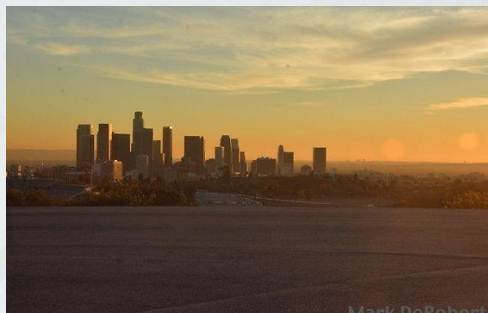
LOCATION

01 Elysian 1-2015

FRIDAY SHORTLIST

NO. 1

A stunning urban skyline provides a beautiful backdrop, and if there's an open road nearby, it could serve perfectly for car scenes. However, the location is more suitable for stationary car shots rather than moving vehicle scenes.

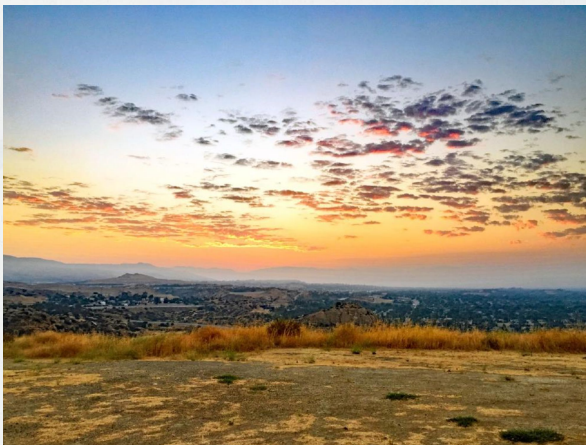


LOCATION

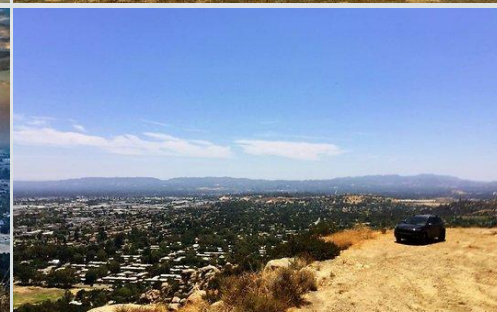
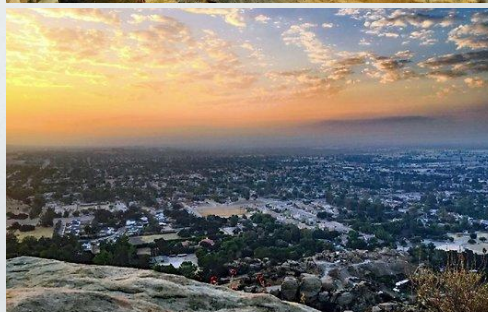
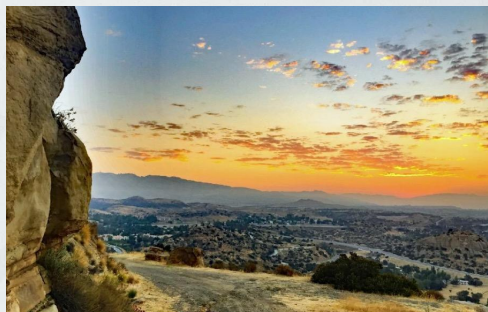
09 Rocky Peak SVC

FRIDAY SHORTLIST

NO. 2



A less urban environment, yet it could provide a stunning backdrop for the travel segments of the story. The dirt road enhances the sense of juxtaposition, and from certain vantage points, there's also a clear view of the city skyline. Compared to the initial urban scenes, this setting creates a striking contrast, helping to convey the feeling of a longer journey.

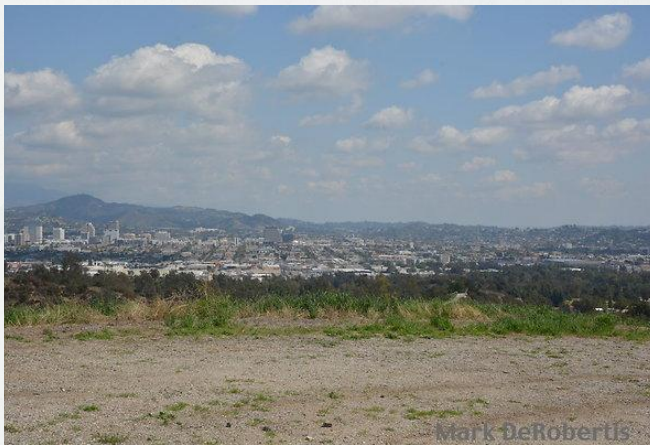


LOCATION

06 Toyon Cyn Griffith Park

FRIDAY SHORTLIST

NO. 3



I A less urban environment, yet it could provide a stunning backdrop for the travel segments of the story. The dirt road enhances the sense of juxtaposition, and from certain vantage points, there's also a clear view of the city skyline. Compared to the initial urban scenes, this setting creates a striking contrast, helping to convey the feeling of a longer journey.



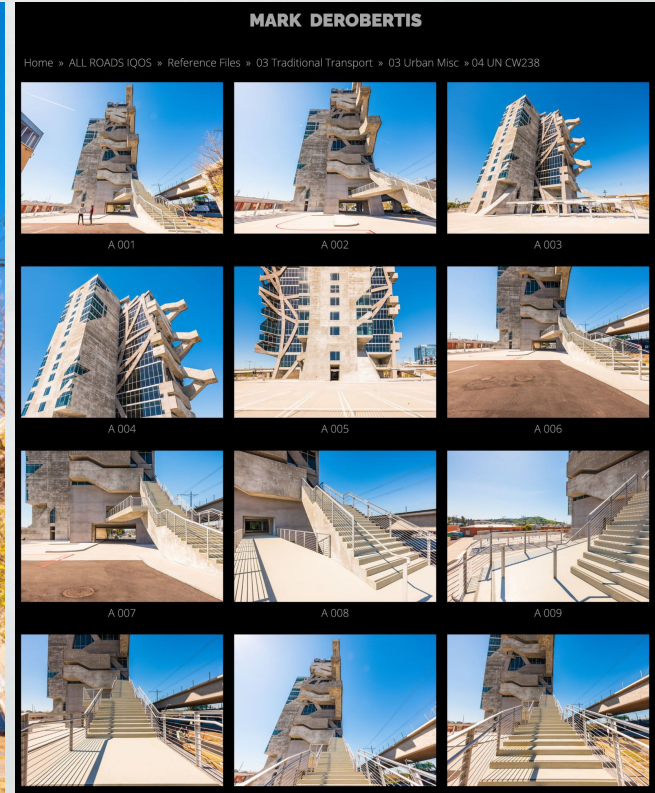
Overcoming barriers

Photography, above and beyond

Always more
story to tell.

LOCATION
04 UN CW238

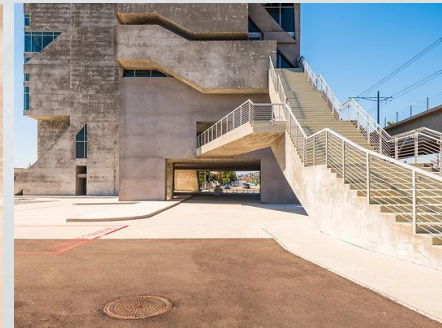
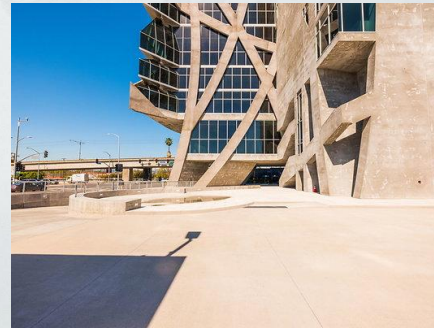
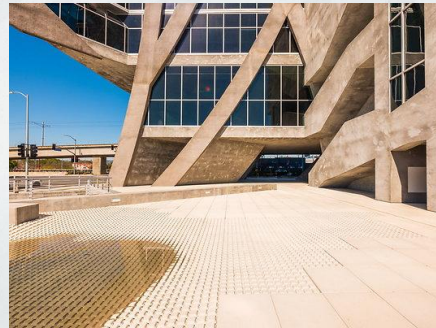
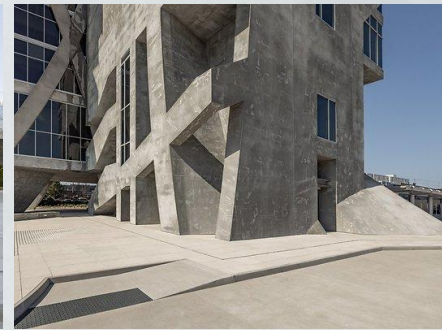
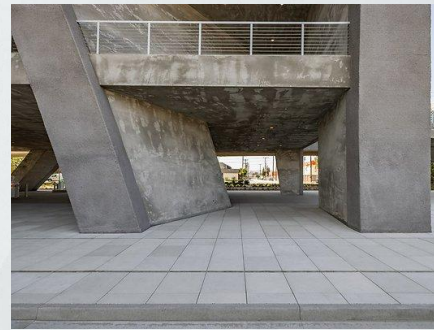
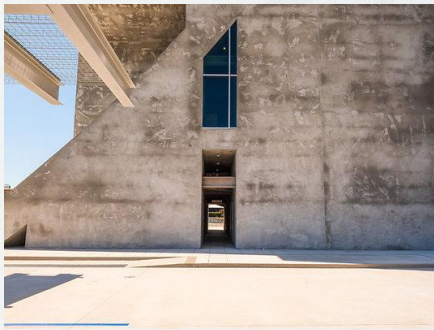
FRIDAY SHORTLIST
NO. _



LOCATION
04 UN CW238

FRIDAY SHORTLIST
NO. _

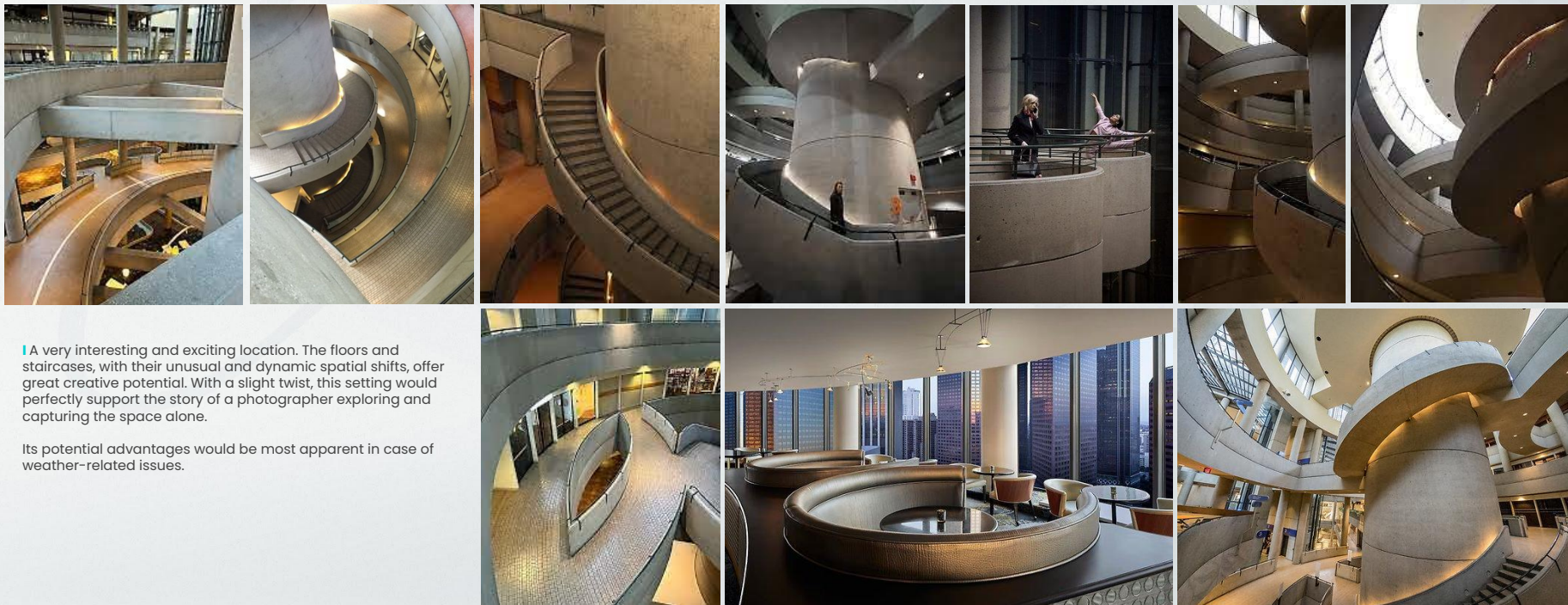
A great opportunity to play with space, offering a variety of high, low, and unusual perspectives. It would be important to confirm whether the rooftop is accessible and what kind of view it offers over the city.



LOCATION

02 Bonaventure

FRIDAY SHORTLIST
NO. _



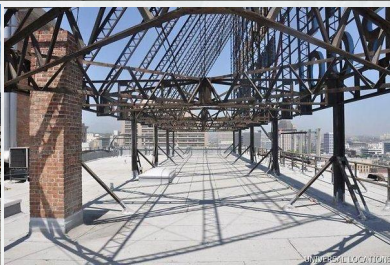
A very interesting and exciting location. The floors and staircases, with their unusual and dynamic spatial shifts, offer great creative potential. With a slight twist, this setting would perfectly support the story of a photographer exploring and capturing the space alone.

Its potential advantages would be most apparent in case of weather-related issues.

LOCATION

04 Frontier Hotel

Since we already have one rooftop scene, we need a wider variety of location ideas for this story. Classic-style buildings, bridges, or settings with a different atmosphere — something that moves away from this rusty, old, and slightly gritty industrial vibe — would help create more visual contrast and diversity.



This rooftop scaffolding could be a very intriguing and distinctive location, offering a strong visual character. Combined with a fence-climbing scene, it sets the stage for moody, unique, cinematic shots.

FRIDAY SHORTLIST

NO. _

Curious journeys

Traditional Transport



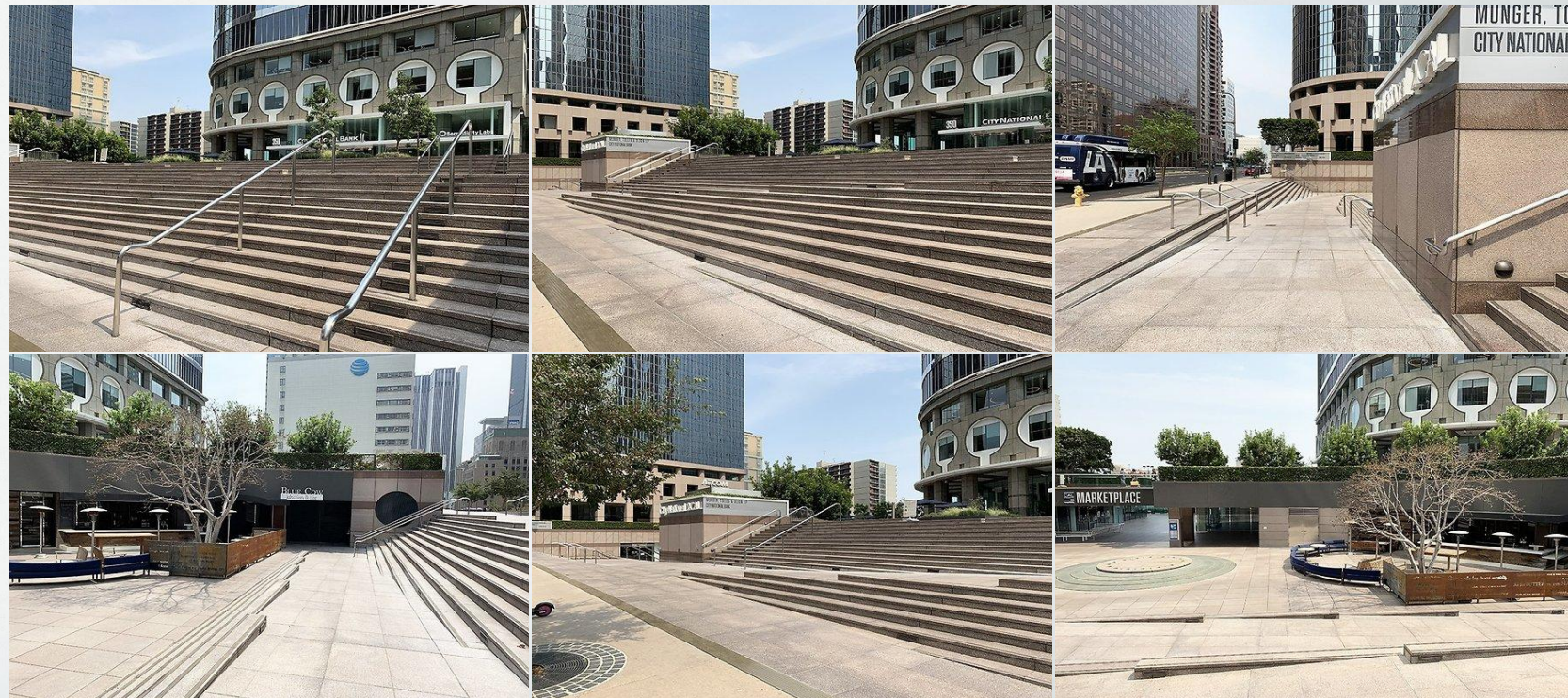
LOCATION
301 Cal LP

FRIDAY SHORTLIST
NO.1



LOCATION
312 Cal LP

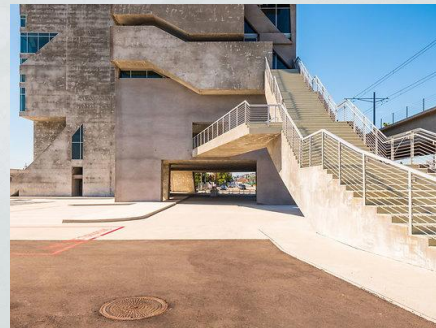
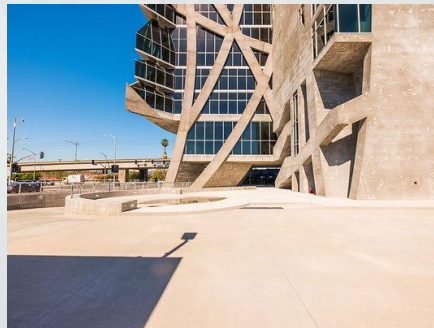
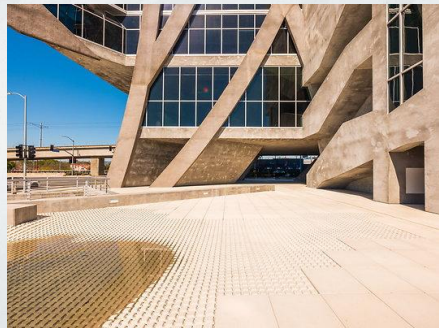
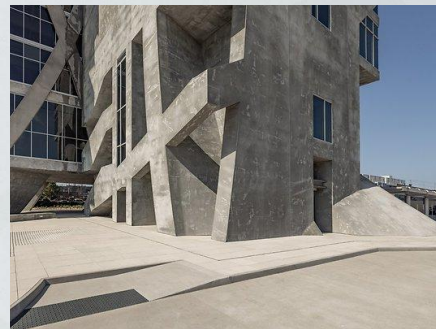
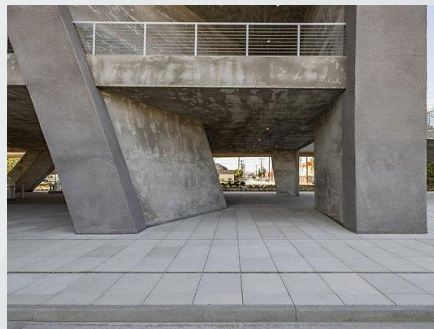
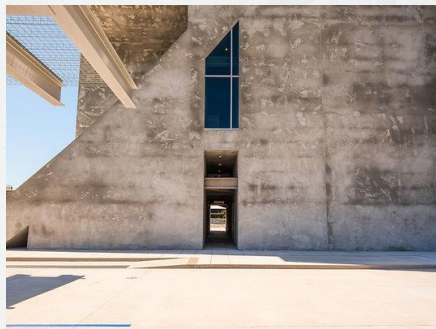
FRIDAY SHORTLIST
NO. 2



LOCATION
04 UN CW238

FRIDAY SHORTLIST
NO. 3

Angular concrete shapes and a brutalist concrete backdrop provide a striking and contrasting setting for the light, flowing, colorful kimono. It may feel a bit intense, but it definitely enhances the sense of juxtaposition.



LOCATION

05 6th West Of Spring _ 06 Spring At 6th

FRIDAY SHORTLIST

NO.4

The street has a slightly European vibe, with a bright, white backdrop that would beautifully highlight the main character. The distinctive entrance is stylish, though it's hard to determine whether it belongs to a hotel, office, or apartment building. Both the street and the corner offer plenty of opportunities for capturing additional, loosely connected shots for the story.



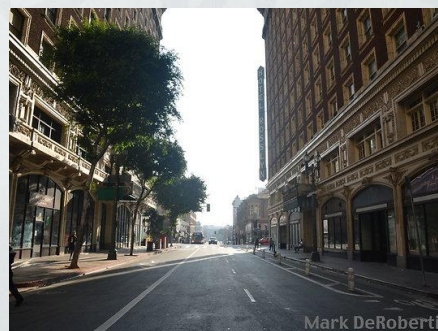
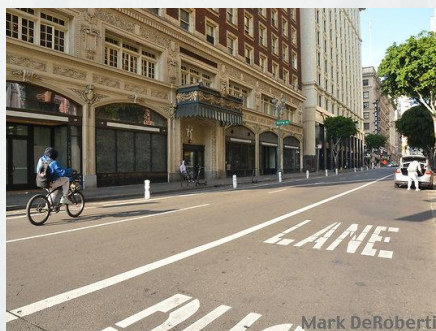
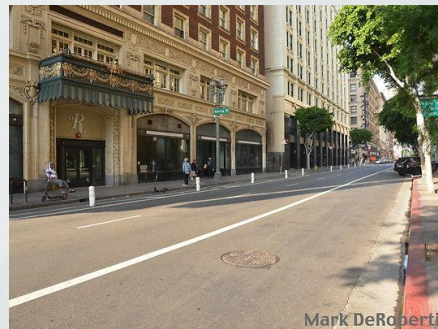
LOCATION

3 5th East Of Spring 1-2022

FRIDAY SHORTLIST

NO.4

IA slightly older-looking streetscape with a charming, stylish atmosphere. While the many storefront windows could present some challenges, the strong, characterful entrance makes for a perfect opening shot.



Overcoming barriers
The Stage



Curious journeys

Show time

Curiosity calls. Answer?

